





Design of a radial multi-offset detection pattern for *in vivo* phase contrast imaging of the inner retina in humans

ELENA GOFAS-SALAS,^{1,6,*}  YUHUA RUI,^{1,2,6} PEDRO MECÊ,¹ 
MIN ZHANG,¹ VALERIE C. SNYDER,¹ KARI V. VIENOLA,¹  DANIEL
M. W. LEE,³ JOSÉ-ALAIN SAHEL,¹ KATE GRIEVE,⁴ AND ETHAN A.
ROSSI^{1,3,5} 

¹Department of Ophthalmology, University of Pittsburgh School of Medicine, Pittsburgh 15106, USA

²Eye center of Xiangya Hospital, Central South University, Hunan Key Laboratory of Ophthalmology, Changsha, Hunan 401302, China

³Department of Bioengineering, University of Pittsburgh Swanson School of Engineering, Pittsburgh 15106, USA

⁴Quinze-Vingts Hospital, Paris 75001, France

⁵McGowan Institute for Regenerative Medicine, University of Pittsburgh, Pittsburgh 15106, USA

⁶Denotes that each of these authors contributed equally to this work

*gofase@pitt.edu

Abstract: Previous work has shown that multi-offset detection in adaptive optics scanning laser ophthalmoscopy (AOSLO) can be used to image transparent cells such as retinal ganglion cells (RGCs) in monkeys and humans. Though imaging in anesthetized monkeys with high light levels produced high contrast images of RGCs, images from humans failed to reach the same contrast due to several drawbacks in the previous dual-wavelength multi-offset approach. Our aim here was to design and build a multi-offset detection pattern for humans at safe light levels that could reveal transparent cells in the retinal ganglion cell layer with a contrast and acquisition time approaching results only previously obtained in monkeys. Here, we present a new single-wavelength solution that allows for increased light power and eliminates problematic chromatic aberrations. Then, we demonstrate that a radial multi-offset detection pattern with an offset distance of 8-10 Airy Disk Diameter (ADD) is optimal to detect photons multiply scattered in all directions from weakly reflective retinal cells thereby enhancing their contrast. This new setup and image processing pipeline led to improved imaging of inner retinal cells, including the first images of microglia with multi-offset imaging in AOSLO.

© 2021 Optical Society of America under the terms of the [OSA Open Access Publishing Agreement](#)

1. Introduction

The adaptive optics scanning light ophthalmoscope (AOSLO) has been continuously improved over the past 20 years to add new capabilities permitting the detection of different classes of retinal cells. These modifications are usually applied to the illumination and detection path of the system to achieve different imaging modalities, often adapting techniques first applied in microscopy. For example, individual retinal pigmented epithelial cells were detected in AOSLO by adding a fluorescence detection channel with appropriate excitation wavelengths and emission filters [1,2]. Another exquisite example of a microscopic technique applied for retinal imaging is phase contrast. Transparent or low contrast retinal structures such as photoreceptors inner segments and capillaries were revealed by implementing phase contrast imaging techniques that are sensitive to variation of the refractive index rather than simply absorption or reflectivity [3]. Phase contrast imaging in the retina using AOSLO can be achieved using a range of modalities based on off-axis detection [4]. The simplest configuration shifts the confocal aperture from its

on-axis position to reject the single backscattered photons from highly reflective layers and detect the multiply scattered light that is forward scattered by retinal structures with low reflectivity. This configuration, called offset-aperture AOSLO [5], reveals the wall structure of capillaries with exquisite detail. Another related technique is non-confocal split-detection AOSLO. Here the light is split into three channels with the central (confocal) portion directed to a first detector, while the light outside the confocal region is split with a mirror and sent to two additional detectors. Images from the two detectors are combined by computing the normalized difference between the images divided by their sum and reveals the photoreceptor inner segments even when the outer segments are degenerated [6].

It has been shown that the scanning beam is deviated in different directions away from the optical axis when going through refractive index gradients within and between single cells, with the amount of steered photons depending on the refractive index gradient magnitude and sign [3,7]. Thus these previously described methods were only capturing part of the translucent cellular information leaving an important number of deviated photons carrying the phase signal undetected. Rossi *et al.* [8] combined the principles of these two non-confocal techniques and developed multi-offset imaging by laterally displacing a pinhole around the optical axis and computing linear combinations between the images obtained at multiple positions across the retinal conjugate focal plane in AOSLO. A confocal image was obtained simultaneously using a different wavelength to permit eye tracking and registration of the images across the different aperture positions that were acquired sequentially. With this off-axis configuration Rossi *et al.* showed the first high resolution images of ganglion cells *in vivo* in monkeys and humans, albeit with lower contrast and signal-to-noise ratio (SNR) in the human.

Achieving *in vivo* imaging of retinal ganglion cells (RGCs) in humans was more challenging than in the monkey due to four main limitations of the imaging system: 1) This dual-wavelength implementation introduced chromatic aberration between the different wavelengths used for multi-offset and confocal imaging, with transverse chromatic aberration causing a lateral displacement of the images and longitudinal chromatic aberration causing them to focus at different positions axially within the retina. This introduces the potential for error when using the confocal image to track the motion of the eye and applying that motion to the offset channels. 2) The dual-wavelength approach also limited the amount of light power for multi-offset imaging that can be sent to the eye (a substantial amount of the light budget was spent on the visible wavelength confocal channel). In addition, lower light levels were used for imaging the humans compared to the monkeys, where monkey imaging was done using light levels much higher (see [8] for details on the light levels used) than those that can be permitted in humans due to safety constraints, resulting in images with substantially lower SNR. 3) Several offsets were used sequentially around the optical axis, rendering the acquisition quite long and therefore fastidious for subjects (affecting the image registration as eye motion increases and adaptive optics performance can decrease due to dry eyes). 4) All images from different offsets were combined and the best combinations among all images was manually identified based on visual criterion leading to long post-processing and analysis times.

Here, we addressed these drawbacks. We show the design and implementation of a radial single-wavelength multi-offset detection configuration for AOSLO that improves the phase contrast in multi-offset AOSLO caused by the limitations of the previous multi-offset system, including chromatic aberrations and low light levels from our previous dual-wavelength AOSLO. We also evaluate the optimal offset detection configuration with respect to pattern and distance of the pinhole with respect to the optical axis. We show that a radial pattern with 8 offset positions is sufficient therefore decreasing the acquisition time. Moreover, we further improve the phase contrast of non-confocal AOSLO by decreasing the Airy Disk Diameter (ADD) at the detection plane. We use the SMART method [7] to combine the offset images and generate an image with the highest contrast possible. Finally, this new system, combined with our registration algorithm

[9] has led to improved detection of transparent cells in the ganglion cell layer including the first high-resolution images of microglia in the human retina *in vivo* using AOSLO.

2. Methods

2.1. Experimental setup

AOSLO system Experiments were carried out on the Pittsburgh AOSLO described in detail elsewhere [10]. In summary, this AOSLO system has four illumination sources and four detection channels. Using custom electronics, a maximum of three channels can be recorded simultaneously. This system has multiple modes of imaging, including confocal imaging, near infrared autofluorescence imaging, multi-offset imaging, and visible light imaging. Though we have previously described the entire system and the results from the near infrared autofluorescence and confocal channels [10], this is the first time the multi-offset sub-system is used and fully described. This new optical setup differs substantially from the two AOSLOs that were used previously for multi-offset imaging in humans and monkeys in Rochester [8]. Suppl. Table 1 summarizes and compares the most relevant differences between our new AOSLO and those used in our previous work [8]. A custom-made chin and forehead rest permits stabilization of the head and a pupil camera enables fast alignment of the position of the eye/head in conjunction with the forehead/chin apparatus being mounted on a motorized translation stage. A combination of fixation target and steering mirror is used to help expand the area that can be imaged and at the same time avoid the need for the participant to fixate too far away from the center which may sometimes cause fatigue. The fixation target is projected onto the retina for the participant to follow, allowing fixation-guided imaging of different locations of the retina, while a steering mirror system permits the experimenter fine control of the position of the imaging beam, and positioning to retinal locations beyond those reachable using the fixation target alone.

Optical design of Multi-offset detection path. The retina was illuminated with a superluminescent diode (MS-795-GI15, Superlum, Dublin, Ireland) centered at 795 nm (FWHM=15nm) that is scanned in a raster fashion at frame rate of 30 Hz across an $1.5^\circ \times 1.5^\circ$ field of view. Light backscattered from the retina is directed towards the detection channel using a dichroic mirror and then focused with an achromatic doublet onto a custom-made mask as shown in the schematic drawing in Fig. 1(a). The ADD at this plane and confocal PMT plane is $27\ \mu\text{m}$ and remains this value throughout the study. This mask is composed of a fused silica substrate upon which gold was deposited to form a mirror of elliptical shape which acts as circular pinhole mirror of 1 ADD when the mask is placed at 45 degrees with respect to the incoming beam. As shown in Fig. 1, the pinhole mirror reflects the central portion of the PSF to the confocal channel while the remainder of the light distribution (outer portion) is transmitted and then focused with a pair of lenses to a second retinal conjugate focal plane for offset imaging. This second PMT had a lens tube that allowed us to change pinhole according to the imaging protocol and was placed on a motorized xyz-stages (Thorlabs, Inc. RB13 with Z812B servo motor actuators) allowing precise control of the pinhole location.

Multi-offset detection pattern. As stated above, the confocal PMT stayed fixed during imaging while the offset channel PMT moved across the xy plane (perpendicular to the optical axis) recording images at different positions. Multi-offset detection pattern refers to the offset PMT positions during the imaging session with reference to the center position. While the confocal PMT plane remained the same throughout this study ($27\ \mu\text{m}$), the ADD at the offset PMT plane was tested with two different values, $27\ \mu\text{m}$ and $13.5\ \mu\text{m}$; this was achieved by changing the last lens in front of the multi-offset PMT (Lens 3 in Fig. 1(a)). It should be noted that when the ADD changed (from $27\ \mu\text{m}$ to $13.5\ \mu\text{m}$) at the offset PMT plane, the pinhole aperture and offset distance changed accordingly in the unit of micrometers but remains the same scale in the unit of ADD. Table 1 lists the 5 detection patterns we used in our study.

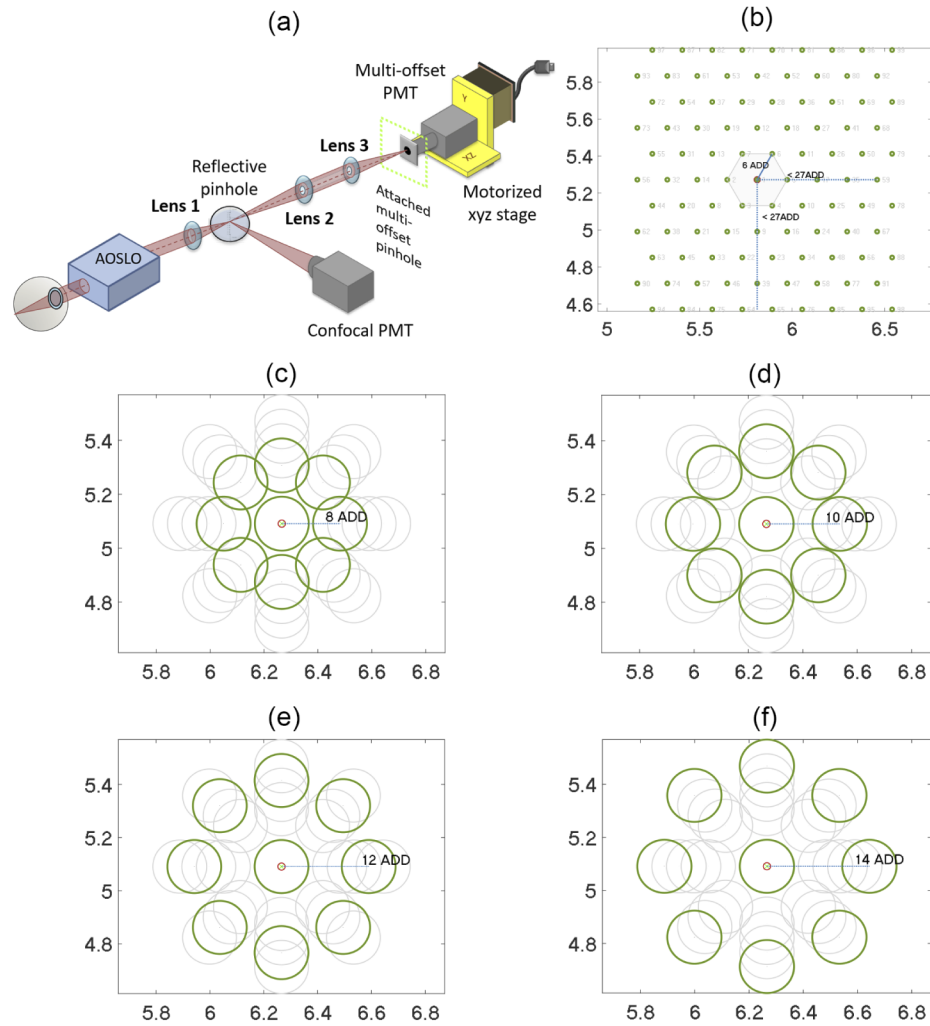


Fig. 1. Experimental set-up. (a) Schematic drawing of the single-wavelength multi-offset detection path in the Pittsburgh AOSLO [10]. After passing through the AOSLO and into this detection channel, a first lens ($f_1 = 100$ mm) focused the light onto a reflective pinhole of 1 ADD size to direct the confocal portion of the light to the confocal PMT. Light outside the confocal area was transmitted and then relayed to a second retinal conjugate focal plane for detection with the multi-offset PMT. Lens 2 has a focal length of $f_2 = 100$ mm. Lens 3 has a focal length of $f_3 = 100$ mm or 50 mm depending on the setting (see Table 1). The multi-offset PMT has another pinhole attached and is mounted on a motorized translation stage for precise positioning across the retinal conjugate focal plane. (b) Detection pattern followed by the multi-offset stage for the 'multi-offset scattering study' (see Table 1) using a small detection pinhole of less than 1 ADD. (c-f) Detection patterns followed by the multi-offset stage for 'multi-offset retinal structure imaging study' (see Table 1) using a larger pinhole of 8 ADD at offset distances {8, 10, 12, 14} ADD respectively. This schematic was inspired by Fig. 1 of Scoles et. al [6].

2.2. Study design and imaging protocol

We started by evaluating the optimal multi-offset configuration on one participant (participant 1) through the two following studies. We first focused on one specific retinal eccentricity (roughly 9°

Table 1. Offset channel parameters

Offset channel parameters	Multi-offset scattering study		Multi-offset retinal structure imaging study		
	setting 1	setting 2	setting 3	setting 4	setting 5
Lens 3 focal length	100 mm	50 mm	100 mm	50 mm	100 mm
Airy Disk Diameter	27 μm	13.5 μm	27 μm	13.5 μm	27 μm
Pinhole aperture	20 μm	12.5 μm	200 μm	100 μm	200 μm
Pinhole aperture	0.74 ADD	0.93 ADD	7.4 ADD	7.4 ADD	7.4 ADD
Sampling pattern illustration	Figure 2(a)	Figure 2(a)	Figure 2(b,c,e,f)	Figure 2(b,c,e,f)	Figure 2(d)
Sampling pattern	hexagon	hexagon	radial	radial	radial
Offset distance	6 ADD	6 ADD	8, 10, 12, 14 ADD	8, 10, 12, 14 ADD	10 ADD
Amount of detector positions	99	99	9	9	4
Imaging time per detector position	1.5 sec	1.5 sec	20 sec	20 sec	20, 60, 120 sec
Total imaging duration of one acquisition	148.5 sec (~2.5 min)	148.5 sec (~2.5 min)	180 sec (3 min)	180 sec (3 min)	20, 60, 120 sec

temporal (T), 3° superior (S)). The 1.5° x 1.5° field of view (FOV) was kept constant throughout image acquisition.

Multi-offset scattering study. Offset detection settings 1 and 2 are used for studying the multi-offset scattering properties (Table 1). We used a small pinhole aperture (0.74 and 0.93 ADD respectively) and the offset detector followed a triangular pattern with a lateral spacing of 6 ADD between adjacent detection positions in each row (see Fig. 1(b)). The maximum offset distance from the center is 27 ADD in all directions, resulting in a total of 99 positions.

Multi-offset retinal structural imaging study. A larger pinhole aperture is used (7.4 ADD) to increase the signal at the detector for formation of the offset images and the offset detector is sequentially positioned in a circular pattern with a total of 9 positions (including the center position). To study the optimal offset detector position pattern for imaging retinal structures, particularly the ganglion cell layer, we first carried out several imaging sessions with the offset detector placed at four offset distances, 8, 10, 12, 14 ADD (settings 3 and 4 from Table 1 and Fig. 1(c-f)). We started at 8 ADD as closer offset pinhole distances empirically showed residual confocal signals reaching the multi-offset detector. We also evaluated the effect of exposure duration for a single offset position. To improve image quality and to study the effect of exposure duration on the signal-to-noise ratio (SNR), we carried out a series of imaging session with longer exposure in 2 pairs of diagonal offset positions. At each position, we acquired 6 sets of 20-second videos, 2 sets of 60-second videos, and a 120-second video.

Testing the offset pattern distance on several participants. With the 8 or 10 ADD offset distance pattern (Fig. 1(c) and (d)), we acquired several image sequences at different retinal locations in multiple participants. Retinal eccentricities imaged can be categorized into three regions: (1) temporal to the fovea within the macula: 4-9.5° temporal and 0-1.5° superior; (2) peripheral retina: 10-14° temporal and 3° both superior and inferior; (3) nasal superior to the fovea: 6-10.5° nasal and 8-9° superior (Fig. 5). At each retinal location, offset images were acquired at 9 positions sequentially (Fig. 1(c)) and a confocal video was simultaneously recorded. We selected the nerve fiber layer for the acquisition by changing the defocus on the deformable mirror and using the confocal channel as a guide to determine the deepest depth where the nerve

fiber bundles were still visible in the confocal image (see Fig. 3(a)). Image sequences were acquired with an exposure time of 20s per aperture position for most experiments.

2.3. Image processing

All image processing was done using Matlab (R2019b, The MathWorks, Inc., Natick, MA)). **Image sequence registration.** The sinusoidal artifact in the image sequence was corrected using previously published methods [11]. Images were then registered using a custom-developed registration algorithm that is described in detail elsewhere [9]. Offset aperture images were co-registered using the confocal sequence as the motion reference. The same reference frame was used for all confocal channel image sequences to ensure that the structure imposed by the confocal channel did not change at all between the different offset aperture images.

Image combination. From the registered sequence we generated average images for each offset position (hereafter called 'offset images'). These offset images were then linearly combined to enhance the phase contrast using the following relationship:

$$I_d = \frac{(I_i - I_j)}{(I_i + I_j)},$$

where I_d is the obtained difference image (hereafter called 'difference images') and I_i and I_j are two offset images generated from two opposite pinhole positions. It should be noted that the background contribution of the resulting difference image is only partially mitigated, as some low frequencies remain.

SMART method. To enhance even more the signal of interest compared to the background, we filtered and combined images using a previously presented spatial frequency-based image reconstruction method (SMART), which was fully detailed elsewhere [7]. The SMART algorithm used here to generate the multi-offset images allows us to combine all difference images from the four directions. To further mitigate the contribution of the background, a low pass filtered version of the image with a normalized cut-off frequency of 0.008 was subtracted from the image. Finally, we enhanced the local contrast of the images by applying contrast-limited adaptive histogram equalization (CLAHE) using the built-in Matlab function with 0.004 as the contrast enhancement limit. The constant values for the cut off frequency and clip limit were selected experimentally. The effect of this filter and contrast adaptation is shown in Suppl. Fig. 1.

2.4. Data analysis

Images were scaled using the Gullstrand simplified relaxed eye model to estimate the value of microns per degree depending on the axial length of the participant.

Computing the Power Spectral Density. We computed the Power Spectral Density (PSD) to evaluate the distribution of power within the spatial frequencies corresponding to the cell mosaics under investigation. Using Matlab, a 2D Fourier transform was applied to the image. Then, we computed the square of the modulus of the Fourier transform. A radial average is then generated and divided by the value of the zero frequency to display the normalized PSD over the spatial frequencies (in cycles per mm). To enhance the energy peak at the spatial frequencies of the ganglion cells we fitted an exponential curve to the data and subtracted it from the initial data. This residual PSD curve displays a distinctive energy peak at a spatial frequency of the spacing of the detected cell mosaic.

Computing the Michelson Contrast. The Michelson contrast metric was computed on multi-offset images obtained from the radial patterns with the four offset distances {8, 10, 12, 14} ADD and for each ADD size 13.5 μm and 27 μm . For each image the Michelson contrast value of 26 regions including a ganglion cell (white rectangles in Fig. 2(e)) was averaged and the standard deviation was computed.

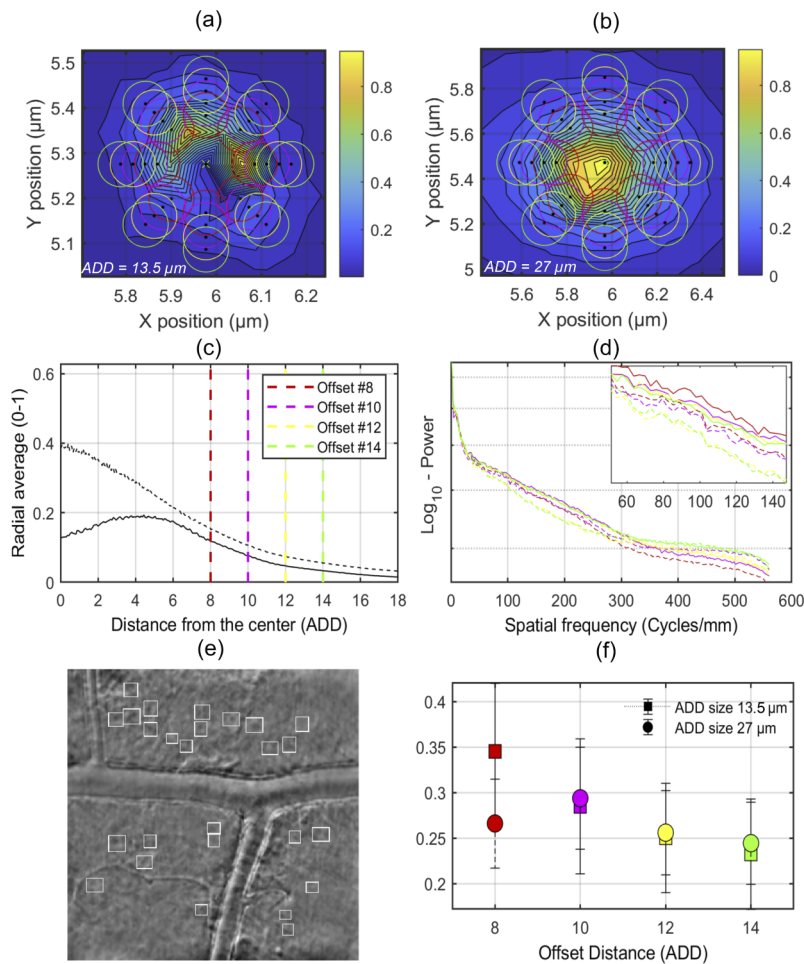


Fig. 2. Image quality metrics. Metrics computed on images of participant 1 at 8° eccentricity. Metrics represented in {red, magenta, yellow, green} were calculated on images acquired at offset distances {8, 10, 12, 14} ADD respectively: (a,b) Surface plots of the pixel intensity at the xy multi-offset detection plane for ADD 13.5 μm and 27 μm respectively; (c) Radial averages of the pixel intensities with respect to the offset distance at the xy multi-offset detection plane. Solid and dashed lines represent 13.5 μm and 27 μm respectively; (d) Power spectra of averages from acquisitions with the four offset distances (8-14 ADD), a zoom highlights the increase in energy around the spatial frequencies corresponding to the ganglion cell spacing. Solid and dashed lines represent 13.5 μm and 27 μm respectively; (e) Multi-offset image showing the region of interest evaluated, acquired with an offset of 8 ADD and 13.5 μm ADD. White rectangles identify ganglion cells where the Michelson contrast was computed; (f) Average Michelson contrasts computed on a range of cells marked with a white rectangle on (e) for multi-offset images obtained with (8-14 ADD) offset distances and with both 13.5 μm and 27 μm ADDs.

The Michelson contrast of the same profile segments of some retinal structures (inner segment, ganglion cell, vessel wall) was computed on the individual offsets, the difference images of opposite offsets and multi-offset images of the retinal region shown in Fig. 3.

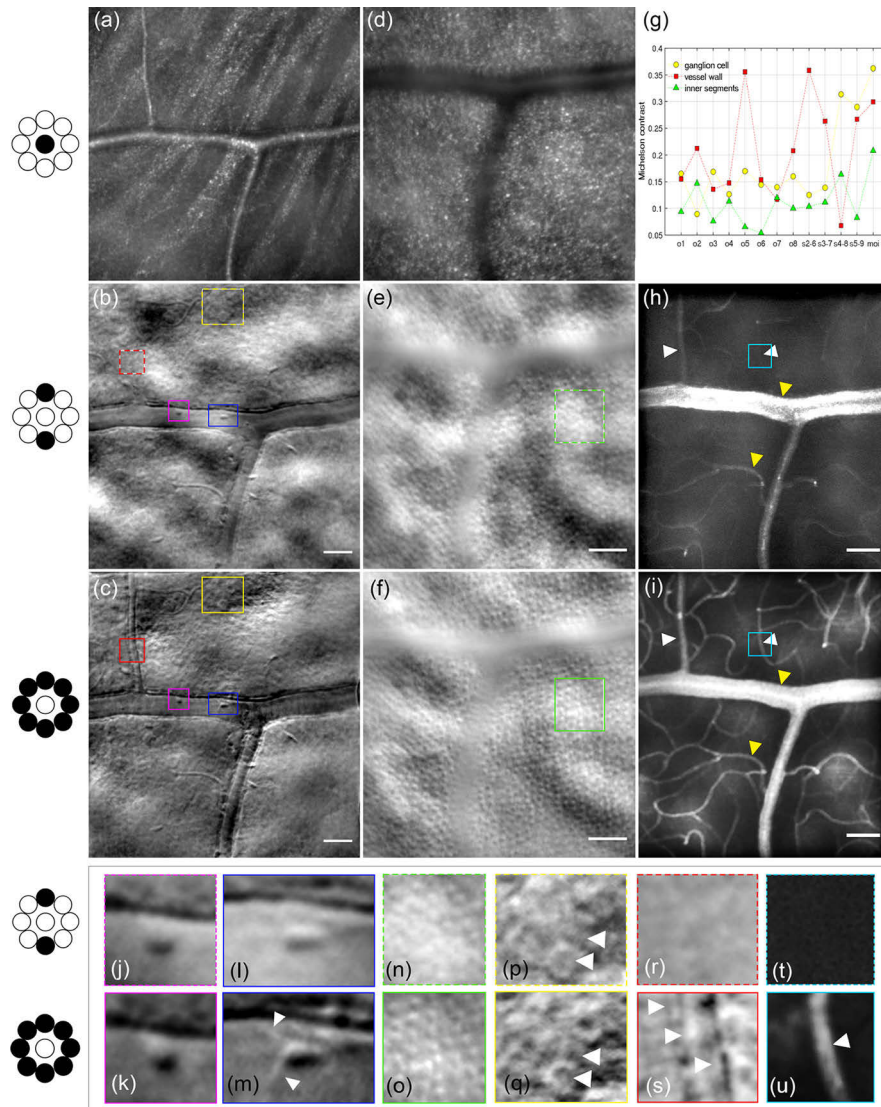


Fig. 3. Multi-offset images of the inner and outer retina demonstrating the improved detection of phase contrast with the radial detection pattern compared to only two offsets. All images are from participant 1 at 8° eccentricity. (a,d) Confocal images; (b,e) Difference images; (c,f) Multi-offset images; (g) Michelson contrast computed on the intensity profiles of an inner segment, vessel wall and RGC cell shown in zooms (n-s) obtained from offset images {o1-o8}, difference images {s1-s4}, and the multi-offset images {moi}; (h,i) Perfusion maps from combination of two offsets and a multi-offset combination. Yellow arrowheads show the vessels and capillaries where the red blood cell motion contrast is enhanced by this offsets direction. White arrowheads show the vessels and capillaries with a very low contrast in the two-offsets perfusion map (as multiply back-scattered photons were not detected by these offset pinholes) while highly contrasted in the multi-offset perfusion map; (j-u) Enlarged regions displayed in magenta, blue, green, yellow, red, and cyan rectangles with a dashed line in the difference images (b,e) and a solid line in the multi-offset images (c,f). (j,k) Microglial cell with a round shape; (l,m) Microglial cell with an elongated shape and processes identified by white arrowheads; (n,o) Inner segments; (p,q) Ganglion cells; (r,s) Vessel wall, (t,u) Capillary perfusion map. White arrowheads show structures present in the multi-offset images such as details of the RGCs or vessels but absent or low contrasted on the difference image. Scale bars are 50 μm .

2.5. Participants

For this study, 18 healthy participants were imaged (6 male and 12 female, ages ranging 20-64 yrs old). Individual participant characteristics including age, sex and eye that was imaged can be found in Table 2. Participants were free from eye conditions including congenital eye diseases, recent ocular infection, glaucoma, and recent eye surgery. They also had clear lenses, deep and quiet anterior chambers, and a refractive error no more than $-4D$. Written informed consent was obtained from all participants following an explanation of experimental procedures and risks both verbally and in writing. All experiments were approved by the University of Pittsburgh Institutional Review Board and adhered to the tenets of the Declaration of Helsinki. The imaging powers used were $590\ \mu W$ for the 795 nm center wavelength SLD and $21\ \mu W$ at 909 nm for the wavefront sensing beacon laser diode. All cumulative light levels for multi-wavelength exposures were below the limits specified by the ANSI [12]. Before each imaging session, we applied eye drops for pupil dilation and cycloplegia (one drop each of 1% Tropicamide and 2.5% Phenylephrine Hydrochloride).

Table 2. Participants information

	Category	Participants (n=18)
Sex	Male	6
	Female	12
Eye	OD	10
	OS	8
Age (years)		30 ± 10

3. Results

3.1. Comparing 4 detection configuration setups

Using the radial detection configuration with 8 offset positions we evaluated four offset distances on participant 1 ($\{8, 10, 12, 14\}$ ADD) as shown in Fig. 1(c-f) in terms of amount of signal detected, PSD at spatial frequencies corresponding to ganglion cells spacing and Michelson contrast of detected cells. We show in Fig. 2 that offset distances 8 ADD and 10 ADD lead to higher signal and image quality for both ADD sizes $27\ \mu m$ and $13\ \mu m$ at the multioffset plane (settings 3 and 4 in Table 1).

Multi-offset scattering quantification The average intensity on the xy plane at the multi-offset detector plane is plotted in Fig. 2(a) for ADD = $13.5\ \mu m$ and (b) for ADD = $27\ \mu m$ of the field of view shown in (e). A colormap shows the distribution of the multiply scattered signal around the center at the detector plane after the confocal part of the beam has been removed by the reflective pinhole. The four multi-offset detection patterns described in Fig. 1(c-f) have been superimposed to the intensity plots to show their respective position with respect to the intensity distribution of the multiply scattered signal. Intensity plots on other participants and eccentricities can be found in Suppl. Fig. 2. In Fig. 2(c) the radial average of (a,b) are shown with respect to the offset distance in ADD. Dashed lines indicate the position of the offsets for the four offset distances evaluated showing how at 12 ADD offset distance the amount of signal is already half what it was at 8 ADD.

Multi-offset imaging quality quantification For each offset distance we computed the PSD (Fig. 2(d)) which shows an increase in energy at the spatial frequencies corresponding to the ganglion cell mosaic spacing (around 80-100 cycles/mm) for the lowest offset distances (8,10 ADD) represented in red and magenta respectively. We also noticed a peak increase of the PSDs corresponding to an ADD size of $13.5\ \mu m$ represented by solid lines. On the contrary the average Michelson contrast values computed on cells indicated in Fig. 2(e) with white rectangles seem

to match for both ADD sizes, with a slight difference for the 8 ADD distance. Nevertheless, similarly to the previous metric, 8-10 ADD offsets lead to more highly contrasted profiles (with well defined cell borders) and higher Michelson contrast.

3.2. Multi-layer imaging of the retina with the radial pattern

The multi-offset AOSLO technique enables us to generate high resolution images of distinctive layers of the retina as illustrated in Fig. 3. With the confocal detector, highly reflective layers can be imaged, resolving fiber bundles (Fig. 3(a)) as well as individual photoreceptors (Fig. 3(d)). With the multi-offset pattern set to 8-10 ADD we evaluated the contrast enhancement of this radial pattern compared to single offsets and difference images for various weakly reflective structures of the retina.

Detection of transparent cells in the Nerve Fiber Layer

Figure 3(c) illustrates an example of ganglion cells obtained in participant 1 with phase contrast through multi-offset imaging using a radial pattern with an offset distance of 8 ADD (with an ADD size of $13\ \mu\text{m}$) on participant 1 at 8° temporal. A zoom indicated in Fig. 3(p,q) show the details of a cluster of ganglion cells. A peak of the PSD (Fig. 4(f)) computed on an average of several multi-offset images (Fig. 4(e)) at this same retinal region was detected at 92 cycles/mm, which corresponds to a cell spacing of $12\ \mu\text{m}$, in agreement with the average size of RGCs at this eccentricity [8,13]. In Fig. 3(g) we show how the phase contrast of the ganglion cells increases by computing the difference images between opposite offsets, and even further when computing the multi-offset image (or moi in the plot). This improvement in contrast can be appreciated in the zoom Fig. 3(p) compared to Fig. 3(q).

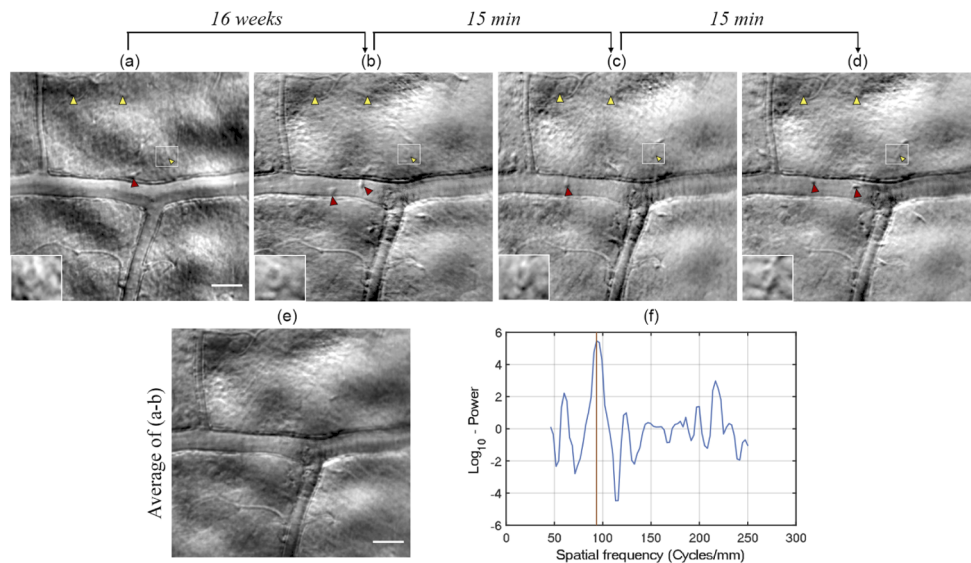


Fig. 4. Reproducibility. (a-d) Images acquired at 4 different time points showing that the same cells can be imaged over time. yellow arrowheads indicate examples of ganglion cells visible at the different time points. Red arrowheads identify putative microglial cells. (e) Average of multi-offset images (a-d) of the same region to increase contrast. (f) Logarithmic plot of the residual of the difference between the Power Spectrum Density of image (e) and its exponential fit. A peak is detected at a 92 cycles per mm (which corresponds to an average cell spacing of $12\ \mu\text{m}$). Scale bar is $50\ \mu\text{m}$.

The new detection pattern has also led to the detection of transparent cells that appear to move around near the blood vessels in the same region over time. We hypothesize based on the size

and motion of these structures that these are microglia. These cells are $\sim 8\text{-}10\text{ }\mu\text{m}$ in diameter and appear to move tens of μm over a timescale of several minutes. The motion can be better observed in [Visualization 1](#) where the arrowheads follow the motion of one of these putative microglial cells. Two examples of putative microglial cells are shown in zoom images Fig. 3(j-m), which shows how although the offset distance enables us to distinguish the microglial cell in the difference image, the cell is much more highly contrasted in the multi-offset image. Particularly we are able in Fig. 3(m) to distinguish what appear to be the processes of this cell. We noticed that these moving cells do not have all the same shape. Some of them display a more rounded shape (see Fig. 3(k)) with no visible processes while others such as the one shown in Fig. 3(m) are more elongated with visible processes.

Improved contrast of structures in other retinal layers

Figure 3(o) show for some regions the resolution of inner segments in the multi-offset image which remain unidentifiable on the difference image obtained from only two detector positions (Fig. 3(n)). This subjective impression is further confirmed by the Michelson contrast metric in Fig. 3(g). Finally, some retinal structures such as vessels display a very directional scattering of the light. This leads to the absence of multiply-scattered photons from vessels reaching some offset pinholes therefore unable to resolve them as shown in the difference image Fig. 3(b). The vessel wall clearly identifiable in multi-offset image Fig. 3(s) by arrowheads is absent for the direction of the difference image Fig. 3(r). This consequence of directional scattering can also be observed in the Michelson metric computed on the vessel shown in Fig. 3(g). Similarly, this effect is also observed in the contrast motion maps generated from the combination of offsets in only one direction. Unlike the contrast motion map generated from all offset videos, Fig. 3(h) display with white arrowheads missing or barely detected capillaries, which are visible in Fig. 3(i).

3.3. Reproducibility

We demonstrate the repeatability of the technique in Fig. 4 where the same ganglion cells can be observed over different time points. We identified examples of the same cells (indicated with arrowheads) on images acquired with a difference of weeks (a,b) as well as on images acquired with a difference of minutes (b,c,d). A zoomed region shows the details of one of these cells. The motion of the microglial cells over a few tens of microns in this layer can also be noticed in Fig. 4 where we denote a few of these cells with red arrowheads.

3.4. Testing on several participants

We tested our radial multi-offset pattern with an offset distance of (8-10) ADD on other participants and detected several cells in the nerve fiber layer. Figure 5 show images of these cells on participants 2 and 7 at Nasal and Temporal eccentricities on multi-offset images. Multi-offset images of transparent retinal structures on other participants can be found in Suppl. Fig.3. As mentioned in previous studies [3] the polarity of cells imaged with phase contrast imaging in the retina can be positive or negative. We identified with white and yellow arrowheads the cells with positive and negative polarity respectively. Cells in positive polarity reach its maximum pixel intensity value at the center while those with negative polarity reach their maximum at the wall and minimum at the center. Inverting the image allows to move from one polarity to another, which helps identify cells. [Visualization 2](#) show the three regions shown in Fig. 5(a,d,g) with alternatively positive and negative polarity and an overlay of some cell labels. As shown in Fig. 5 cells with different polarities are simultaneously captured in the same region with our multi-offset technique. We also observe a range of soma sizes, with cells as small as $6\text{-}8\text{ }\mu\text{m}$ going up to $20\text{ }\mu\text{m}$. A table in Suppl. Fig.4 (b) summarizes the averages computed on several participants of soma sizes, spatial frequencies of the PSD peaks shown in Suppl. Fig.4 (a) and the density and cells spacing derived from these spatial frequencies.

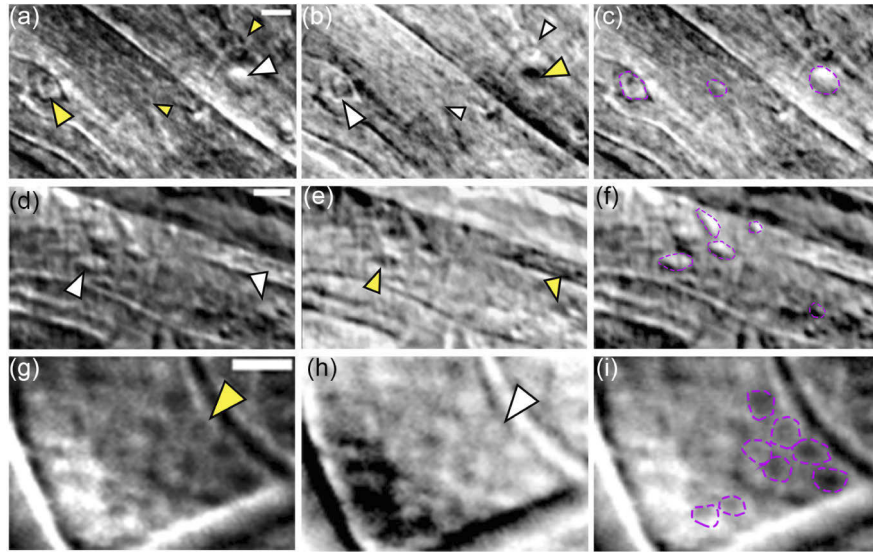


Fig. 5. Visualizing cells on other participants. Multi-offset images on participants 2 (a-f) at 12° Nasal and 7 (g-i) at 8-10° Temporal (j-m)); White and yellow arrowheads identify cells in the Nerve Fiber layer with positive (bright center and dark border) and negative (darker in the center and bright borders) polarity respectively. Scale bars are 10 μ m. Images obtained on other participants can be found in Supplementary Fig. 3.

4. Discussion

We implemented a new radial multi-offset detection AOSLO setup and image processing routine optimized to enhance the phase contrast signal from the weakly reflective structures in the inner retina. This new optical setup has obviated some of the major limitations of our previous approach [8] and though a complete ganglion cell mosaic was not detected, the contrast of cells in this layer was substantially increased (see Fig. 3,4). This builds on our previous work and allowed us also to demonstrate the impact of offset distance, position in space, and ADD size on the directional scattering properties for blood vessels, inner segments and other cells in the nerve fiber layer. Our new approach also enabled us to achieve the first visualization of microglia in the human retina using AOSLO.

One of our main aims here was to overcome previous experimental limitations to improve the phase contrast signal of the ganglion cell layer in humans *in vivo* in AOSLO. By splitting the confocal and multi-offset detection channels with the custom-made reflective pinhole we were able to use the same imaging wavelength for both channels, in a similar way to nonconfocal split-detection [6]. This was a major improvement as it eliminated any possible blur induced from transverse chromatic aberration when using a different wavelength for confocal imaging and for tracking eye motion. We usually assume that there is a fixed Transverse Chromatic Aberration (TCA) between each imaging channel but changes in pupil position can change the TCA and this can be rendered as motion blur when assuming a fixed offset. This is not an issue when we use the same wavelength of light to track the eye as we do for the multi-offset imaging. The use of a single near infrared imaging source permitted the use of higher light levels than for our previous multi-wavelength implementation of multi-offset imaging that used a combination of visible and near-infrared (NIR) light. Removing the hazards associated with visible light exposures permitted us to use more NIR light for imaging safely.

The principle behind this technique, previously described [14,15], is to detect the phase signal of the photons after going through the cells by converting it into intensity at the detection plane. It is achieved by shifting the detection pinhole away from the center in different directions. The light going through the cells is deviated differently depending on the refractive indices and therefore photons from different regions of the cell do not reach the same offset aperture leading to differences between adjacent tissues with different refractive indexes in transparent cells [3]. In [Visualization 3](#) we show a Fourier Transform of the same region shown in Fig. 3(a) acquired with each of the 8 offsets showing the spectral information rotating around the center as we move through the pinholes. As the contrast of the offset images results from the differences in phase of the detected photons, this variation in spectral content is directly linked to a variation in the detected phase. In addition to observing this variation in spectral information when moving the pinhole around the center we explored the distribution of multiply scattered light, which carries the phase information, in the detection plane. We noticed that although there is some directionality in the signal distribution (Fig. 2(a,b) and Suppl.Fig.2) these photons are mostly scattered all around the center. Furthermore, the fact that the scattering directionality is most likely related to type and orientation of retinal features imaged such as vessels or nerve fibers, a radial pattern enables the capture of photons deviated in all directions without the need to determine first their main direction of scattering.

In our current technique, which was inspired by phase contrast microscopy [16,17] and from previous off-axis configurations in the ophthalmic community [5,6,18,19], we generated what we call difference images by subtracting the images from the opposite offsets to cancel the background as well as absorption signals leaving only the phase signal. The highest phase contrast is theoretically generated by subtracting opposite pinholes, as with homogenous illumination they should lead to opposite phase values, and therefore double the signal when subtracted. However, as our background was not homogenous, we were unable to cancel it fully as can be seen in Fig. 3(c) where the cell signal remained modulated by the low frequencies of what we hypothesize corresponds to a choroidal signal. This is likely due to the apparent displacement of the low spatial frequency features of the background with change in aperture position (this apparent parallax in the images causes the background to appear to move when the aperture is offset to different positions).

Given the weak phase signal coming from transparent cells in this layer such as the ganglion cells and microglia we explored different parameters of this radial configuration, such as the offset distances and the size of the ADD at the detector plane, that would increase our image quality metrics. We had two objectives, firstly to evaluate if the relative distance in ADD would remain constant by changing the magnification of the detection plane, and secondly to determine the effect of a lower magnification (i.e. a smaller ADD size at the detection plane) on the phase contrast. The starting offset distance of 8 ADD was selected by placing the pinhole at a distance where the residual confocal (singly scattered light) signal was not visible on larger vessels on the multioffset detection channel. The sampling of the multiply scattered light also allowed us to evaluate the signal decrease with respect to the distance from the center of the Airy disk (Fig. 2(c)), which displays a similar decay for all the tested regions and ADD sizes (see Suppl.Fig.2). We selected a range of 8-10 ADD offset distances which captured the largest amount of the multiply scattered signal to have the highest SNR. The results in Fig. 2(d,f) showed for both ADD sizes respectively that an offset distance of 8-10 ADD provided the highest contrast. This is most likely governed partially by the scattering distance that leads the signal to reach higher intensity at these distances (Fig. 2(a,b)) and related to the difference in refractive index between ganglion cells and medium. When the latter increases the difference between the pixel intensity of the cell border with respect to the medium also increases as shown in Fig. 2(f). The fact that this optimal distance seems to remain constant in ADD would facilitate the implementation of this setup on other AOSLO systems. It also implies that by simply changing the ADD size at the detector plane,

different fiber optic bundles could be used to achieve this configuration. Nevertheless it is worth mentioning the slight enhancement of the energy peak observed at the spatial frequencies of the ganglion cells mosaic when decreasing the Airy disk diameter (see Fig. 2(d)). This suggests that other groups might benefit from decreasing the magnification of the offset detection path lens telescope in their AOSLO that is usually set to a magnification that facilitates alignment with larger Airy disk diameters.

We demonstrated not only the capacity of our multi-offset radial pattern to detect other retinal structures typically imaged with phase contrast (i.e. vessel walls, capillaries or inner segments), but also showed through the image quality metrics an enhancement in contrast by combining the radially distributed pinholes. This pattern enables us to mitigate the effect already described in the literature [5] of disappearing vessels depending on the relative position of the offset pinholes due to the directionality of the scatter. This showed that for offset aperture imaging of retinal vasculature, a pattern that covers all angles is necessary to capture a full perfusion map of all the vessels (see Fig. 3). This radial detection seems also necessary for a fine detection of the microglia features. In Fig. 3(m) the cell processes can only be identified in the multi-offset image while absent on the difference image. We were able to notice thanks to the enhanced contrast of the pattern that microglial cells displayed different shapes, with some more elongated than others. The round shape of the cell shown in Fig. 3(k) suggest that it might be a macrophage while the ones like the cell shown in Fig. 3(m) might be another type of microglia with processes. Due to the high contrast reached by this detection we will be able to monitor and classify the different types of microglial cells by their morphometric properties.

We tested our detection scheme on several participants as shown in Fig. 5. We show for several multi-offset images from three different eccentricities clusters of cells in the nerve fiber layer for which we computed the properties of soma size and cell spacing presented in the Table in Suppl.Fig.4 (b). Although we were not able to show ganglion cells with the same contrast as participant 1, the improvement brought by this detection scheme enabled us to raise the contrast and revealed transparent cells in the nerve fiber layer in several subjects and eccentricities. The fact that not all participants displayed the same contrast levels can be attributed to common issues such as non-optimal tear film layer, watering eyes or excessive fixational eye movements. In future work, the monitoring of these structures over time on the same participants should enable us to characterize them and determine their origin.

Adaptive Optics Optical Coherence Tomography (AO-OCT) is the only other method aside from multi-offset AOSLO to achieve imaging of transparent inner retinal structures [13]. It detects singly back-scattered light from transparent retinal tissue and is thought to exploit organelle motility inside ganglion cell somas to generate high contrast images of RGCs, which allowed them to identify ganglion cell somas and quantify structural parameters such as soma density and diameter. Though RGC cell contrast is lower in multi-offset compared to AO-OCT, there are important differences to consider. Since organelle motility over several minutes seems necessary for AO-OCT to detect RGCs, there is the possibility that multi-offset imaging and integration over such longer timescales may result in increased contrast. Previous work on non confocal imaging in AOSLO suggests that the contrast formation mechanism in multi-offset imaging is driven by variations in refractive index. However, we cannot completely rule out that organelle motility, the theorized origin of the contrast in AO-OCT, may have a role in the final contrast, particularly given our current acquisition time of a few minutes. However, this timescale is shorter than the 20 minutes or so of volumetric imaging/averaging required for AO-OCT. This hypothesis could be tested if we achieve simultaneous acquisition of our offsets and reduce the total acquisition time. Nevertheless, we can assume a difference in contrast origin which implies that although revealing the same cells, the two techniques could potentially provide complementary information about the RGC layer. For example, previous multi-offset imaging in monkeys suggested that sub-cellular structures, such as cell nuclei might be detectable [8]; these cellular features are absent in the

AO-OCT images [13]. Future development could aim to implement an AOSLO/AO-OCT setup similar to the work of Tam's group [20] to overlay both signals from ganglion cells.

We also verified the ability to reproduce the same cell over time by recording several acquisitions with the same detector configuration and eccentricity at different time points. The presence of the same cellular structure within longer and short intervals demonstrated the potential of the monitoring capacity of this technique. Moreover, in [Visualization 1](#) we can see how ganglion cells remain still in the background while other structures navigate through this layer over intervals of a few minutes. As mentioned before we hypothesized that these moving structures are microglia and we believe that multi-offset imaging will allow microglia dynamics to be studied in a similar way to what was recently shown for AO-OCT [21]. However, given that AO-OCT imaging requires acquiring several data volumes and averaging images over a significant amount of time, our multi-offset technique may reach a higher temporal frequency and therefore finer motion monitoring of these cells. In addition, for those microglial cells with features such as the one shown in Fig. 3(m), the dynamics of the processes could be analyzed similarly to what Joseph et al. [22] have carried out on mice.

One of the caveats of sequential acquisition is that it increases the total acquisition time, which again is not ideal from the patient imaging perspective. Parallelizing the offset imaging and recording each channel simultaneously would speed up imaging as light waste would be significantly reduced. We are currently implementing a fiber bundle using the parameters from the optimized radial pattern designed in this study to decrease the exposure time and more importantly to guarantee simultaneous acquisition of the multiply scattered light by all offset pinholes as fixational eye movements currently lead to slight displacements of the field of view of the images from the different pinholes during the acquisition. This motion probably leads to slight changes in the expected detected phase eventually affecting the difference images. Additionally, it is possible that moving cells, such as the putative microglia we show here could appear to be slightly elongated due to the long temporal acquisition combined with the cells motion. Simultaneous acquisition will allow for the motion of these putative microglia to be tracked at finer timescales and has the potential to improve the success rate for imaging of participants with poor fixation.

5. Conclusion

We optimized multi-offset imaging with an improved single-wavelength optical system to mitigate the impact of the limitations imposed by our previous multi-wavelength approach. We implemented a radial multi-offset detection pattern to achieve improved phase contrast of transparent retinal cells in the inner retina at different eccentricities and participants. We demonstrated the enhancement in contrast with respect to more standard phase contrast imaging techniques such as offset or split-detection, and with respect to previous multi-offset setups. Multi-offset imaging could be a complementary tool to AO-OCT, allowing for the study of the dynamics of microglia in health and disease and providing complementary information on RGCs and other inner retinal structures.

Funding. Nvidia (GPU Grant Program); Research to Prevent Blindness; National Institutes of Health (CORE Grant P30 EY08098); University of Pittsburgh; Foundation Fighting Blindness (PPA-0819-0772-INSERM); BrightFocus Foundation (G2017082); Eye and Ear Foundation of Pittsburgh.

Acknowledgments. The authors would like to thank Austin Roorda for sharing his AOSLO software with us and Pavan Tiruveedhula for electronics fabrication, software, and technical assistance.

Disclosures. Ethan A. Rossi has patents on some aspects of the technologies used to carry out these experiments (US10,772,496; US10,123,697; & US10,092,181). All other authors declare that they have no conflicts of interest related to this article.

Data availability. Data underlying the results presented in this paper are not publicly available at this time but may be obtained from the authors upon reasonable request.

Supplemental document. See [Supplement 1](#) for supporting content.

References

1. J. I. Morgan, A. Dubra, R. Wolfe, W. H. Merigan, and D. R. Williams, "In vivo autofluorescence imaging of the human and macaque retinal pigment epithelial cell mosaic," *Invest. Ophthalmol. Visual Sci.* **50**(3), 1350–1359 (2009).
2. C. E. Granger, D. R. Williams, and E. A. Rossi, "Near-infrared autofluorescence imaging reveals the retinal pigment epithelial mosaic in the living human eye," *Invest. Ophthalmol. Visual Sci.* **58**, 3429 (2017).
3. A. Guevara-Torres, D. Williams, and J. Schallek, "Origin of cell contrast in offset aperture adaptive optics ophthalmoscopy," *Opt. Lett.* **45**(4), 840–843 (2020).
4. S. A. Burns, A. E. Elsner, K. A. Sapoznik, R. L. Warner, and T. J. Gast, "Adaptive optics imaging of the human retina," *Prog. Retinal Eye Res.* **68**, 1–30 (2019).
5. T. Y. Chui, D. A. VanNasdale, and S. A. Burns, "The use of forward scatter to improve retinal vascular imaging with an adaptive optics scanning laser ophthalmoscope," *Biomed. Opt. Express* **3**(10), 2537–2549 (2012).
6. D. Scoles, Y. N. Sulai, C. S. Langlo, G. A. Fishman, C. A. Curcio, J. Carroll, and A. Dubra, "In vivo imaging of human cone photoreceptor inner segments," *Invest. Ophthalmol. Visual Sci.* **55**(7), 4244–4251 (2014).
7. P. Mecê, E. Gofas-Salas, Y. Rui, M. Zhang, J.-A. Sahel, and E. A. Rossi, "Spatial-frequency-based image reconstruction to improve image contrast in multi-offset adaptive optics ophthalmoscopy," *Opt. Lett.* **46**(5), 1085–1088 (2021).
8. E. A. Rossi, C. E. Granger, R. Sharma, Q. Yang, K. Saito, C. Schwarz, S. Walters, K. Nozato, J. Zhang, T. Kawakami, W. Fischer, L. R. Latchney, J. J. Hunter, M. M. Chung, and D. R. Williams, "Imaging individual neurons in the retinal ganglion cell layer of the living eye," *Proc. Natl. Acad. Sci.* **114**(3), 586–591 (2017).
9. M. Zhang, E. Gofas-Salas, B. T. Leonard, Y. Rui, V. C. Snyder, H. M. Reeher, P. Mecê, and E. A. Rossi, "Strip-based digital image registration for distortion minimization and robust eye motion measurement from scanned ophthalmic imaging systems," *Biomed. Opt. Express* **12**(4), 2353–2372 (2021).
10. K. V. Vienola, M. Zhang, V. C. Snyder, J.-A. Sahel, K. K. Dansingani, and E. A. Rossi, "Microstructure of the retinal pigment epithelium near-infrared autofluorescence in healthy young eyes and in patients with amd," *Sci. Rep.* **10**(1), 9561 (2020).
11. Q. Yang, L. Yin, K. Nozato, J. Zhang, K. Saito, W. H. Merigan, D. R. Williams, and E. A. Rossi, "Calibration-free sinusoidal rectification and uniform retinal irradiance in scanning light ophthalmoscopy," *Opt. Lett.* **40**(1), 85–88 (2015).
12. ANSI Z136.1, American National Standard for Safe Use of Lasers (Laser Institute of America, Orlando, USA, 2014).
13. Z. Liu, K. Kurokawa, F. Zhang, J. J. Lee, and D. T. Miller, "Imaging and quantifying ganglion cells and other transparent neurons in the living human retina," *Proc. Natl. Acad. Sci.* **114**(48), 12803–12808 (2017).
14. Y. N. Sulai, D. Scoles, Z. Harvey, and A. Dubra, "Visualization of retinal vascular structure and perfusion with a nonconfocal adaptive optics scanning light ophthalmoscope," *J. Opt. Soc. Am. A* **31**(3), 569–579 (2014).
15. D. Cunefare, R. F. Cooper, B. Higgins, D. F. Katz, A. Dubra, J. Carroll, and S. Farsiu, "Automatic detection of cone photoreceptors in split detector adaptive optics scanning light ophthalmoscope images," *Biomed. Opt. Express* **7**(5), 2036–2050 (2016).
16. D. Hamilton, C. Sheppard, and T. Wilson, "Improved imaging of phase gradients in scanning optical microscopy," *J. Microsc.* **135**(3), 275–286 (1984).
17. T. N. Ford, K. K. Chu, and J. Mertz, "Phase-gradient microscopy in thick tissue with oblique back-illumination," *Nat. Methods* **9**(12), 1195–1197 (2012).
18. R. H. Webb, G. W. Hughes, and F. C. Delori, "Confocal scanning laser ophthalmoscope," *Appl. Opt.* **26**(8), 1492–1499 (1987).
19. A. E. Elsner, S. A. Burns, J. J. Weiter, and F. C. Delori, "Infrared imaging of sub-retinal structures in the human ocular fundus," *Vision Res.* **36**(1), 191–205 (1996).
20. A. J. Bower, T. Liu, N. Aguilera, J. Li, J. Liu, R. Lu, J. P. Giannini, L. A. Huryn, A. Dubra, Z. Liu, D. X. Hammer, and J. Tam, "Integrating adaptive optics-slo and oct for multimodal visualization of the human retinal pigment epithelial mosaic," *Biomed. Opt. Express* **12**(3), 1449–1466 (2021).
21. D. X. Hammer, A. Agrawal, R. Villanueva, O. Saeedi, and Z. Liu, "Label-free adaptive optics imaging of human retinal macrophage distribution and dynamics," *Proc. Natl. Acad. Sci.* **117**(48), 30661–30669 (2020).
22. A. Joseph, D. Power, and J. Schallek, "Imaging the dynamics of individual processes of microglia in the living retina in vivo," *Biomed. Opt. Express* **12**(10), 6157–6183 (2021).